

NAPO PIZZA NAPOLETANA

CONTACT	2
GENERAL INFORMATION	2
ACCESSIBILITY	2
Accessibility by public transport	2
PARKING	2
ENTRANCE	2
Ramp	2
Entrance door	3
INTERIOR AREA	3
Ramp to the WC and another dining area	3
TOILET	4
OUTDOOR DINING AREA	5



CONTACT

NAPO PIZZA NAPOLETANA

Neutorgasse 22
 8010 Graz
 T +43 664 1104525
 hello@napopizza.at
<https://www.napopizza.at>

GENERAL INFORMATION

Every pizza is made by hand and perfected by the Pizzaiolos. Culinary crossovers are created here, using typical Styrian and Italian ingredients, and delicious vegan pizzas are also on offer. The creations can be enjoyed from April to October in the sunny garden. A new room accommodating up to 60 guests is available for groups and events. The NAPO motto: “Good to have you – we love what we do!”

ACCESSIBILITY

Accessibility by public transport

Please use the route planner of the Verbundlinie Steiermark:
<https://verkehrsankunft.verbundlinie.at>

PARKING

- 2 marked disabled parking spaces in Neutorgasse (near house numbers 5 and 32), approx. 50 and 70 metres away respectively; short-stay parking zone in the same location
- 1 marked disabled parking space on Grieskai (near house no. 2) on the other side of the Mur, approx. 200 m from there; short-term parking zone in the same place.

ENTRANCE

The main entrance is the barrier-free entrance. It is accessible via a ramp.

Ramp

- Length 340 cm, width 130 cm, **Gradient 8%**
- Surface easily accessible with a wheelchair
- Ramp not covered
- Handrail on one side, height 100 cm; below there is a second handrail at a height of 60 cm
- Ramp supplemented with 2 steps on the other side



Entrance with ramp

Entrance door

- covered
- Hinged door made of glass, not marked
- Door opening 80 cm, threshold 2 cm
- Closes automatically
- Vertical door bar at standard height on the outside, panic bar on the inside
- Approach area slightly restricted: outside 170 x 130 cm, inside 130 x 200 cm (standard: 150 x 200 cm)
- The door is always open in summer

INTERIOR AREA

- Flooring is easily accessible with a wheelchair and non-slip
- **Counter height 110 cm, no under-counter wheelchair access**
- There are high tables and low tables.
- **All low tables are equipped with a central foot, so the wheelchair accessible depth of the tables is only 36 - 38 cm** (standard min. 60 cm)
- Table bottom edge approx. 72 cm, top edge approx. 75 cm
- Chairs 48 cm high, with sturdy backrest
- Fixed benches 50 cm high

Ramp to the WC and another dining area

- 150 cm long, generally 177 cm wide, but narrower due to stored flour sacks
- Max. 6% incline
- No handrail



Interior area

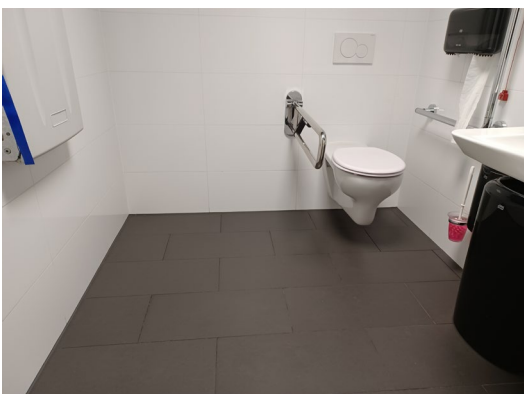
TOILET

The accessible toilet is located in the passageway between two dining areas and can be reached via the ramp described above. It is also the general ladies' toilet..

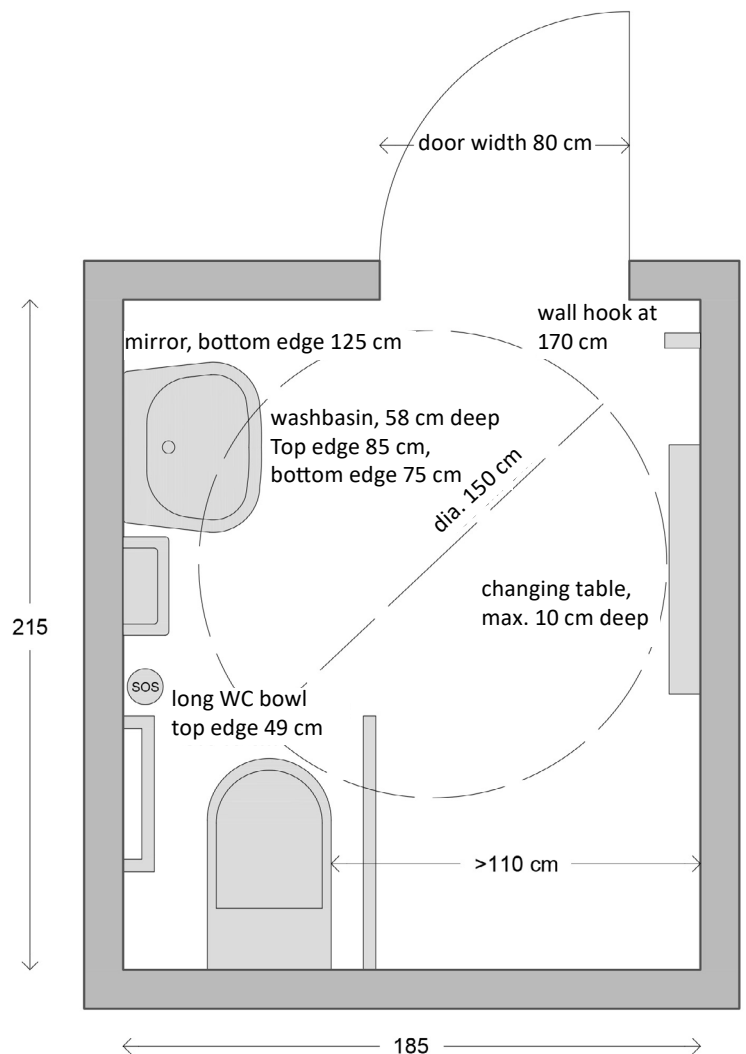
- Hinged door with door handle
- clear door width 80 cm
- Turning circle of 150 cm available
- toilet height: 49 cm (top edge)
- Toilet accessible from the left, at least 110 cm of space on this side
- 1 folding support rail and 1 angle rail at standard height (75–85 cm)
- Washbasin top edge 85 cm, bottom edge 75 cm, depth 58 cm
- **Mirror hung too high for wheelchair users (lower edge 125 cm instead of max. 95 cm)**
- **Coat hooks also too high (170 cm)**
- Emergency call bell available
- Fold-out changing table available



Access to WC



Accessible WC



OUTDOOR DINING AREA

- **Not accessible without thresholds**
- Surface paved with exposed aggregate concrete slabs, slightly uneven; shifted slabs create thresholds in some places
- Tables with central legs, therefore **the wheelchair accessible depth of the tables is only 30 cm** (standard min. 60 cm)
- Table bottom edge 73 cm, top edge 75 cm
- Seat height of chairs 45 cm



Transition to outdoor dining area



Outdoor dining area

As of March 2026, all information subject to change

Photos: Graz Tourismus – Harry Schiffer, Napo Graz – fiedlerphoto