



## SCHLOSS EGGENBERG

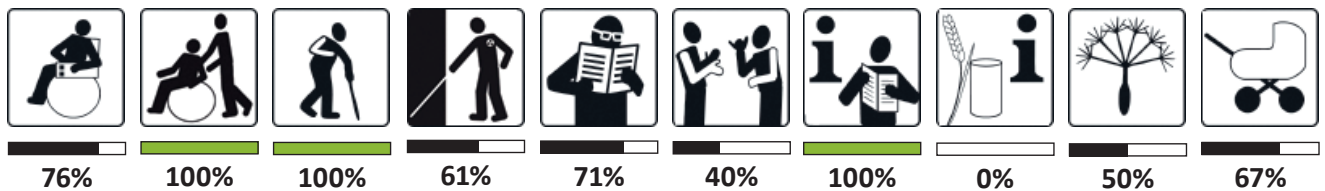
Eggenberger Allee 90

8020 Graz

T +43 316 8017-9560

eggenberg@museum-joanneum.at

www.welterbe-eggenberg.at



When visiting Schloss Eggenberg, you should definitely make time for a walk through the beautiful palace park. There is a bell at the park entrance to open the gate automatically. The paths around the palace are lightly gravelled, but can still be easily used by wheelchair users. The toilet facilities are barrier-free. The historic flooring inside the castle may not always be so easy to negotiate in a wheelchair, but if it is difficult or impossible to get around, the staff will be happy to help. Wheelchairs can also be borrowed free of charge if required. The Coin Cabinet is equipped with magnifying glasses so that the exhibits in the display cases can be viewed in detail. Various educational programmes, e.g. for children or senior citizens, offer the opportunity to discover the castle and all its exhibitions for yourself.

### ACCESSIBILITY

#### Accessibility by public transport

Please use the route planner of Verbundlinie Steiermark:  
<https://verkehrsankunft.verbundlinie.at/>

#### Car park

- Disabled car park with sufficient width near the barrier-free entrance
- Marked by floor markings and signage, not covered
- Car park on a level surface

#### PATHS OUTSIDE

- Paths at least 120 cm wide, free of immovable obstacles
- Path is level and relatively easy to roll on, but not ideal due to slabs made of natural stone
- Path covered and well lit
- Path max. 100 m long or with seating along the path
- No tactile and visual guidance system



Entrance gate to Palace Park

## ENTRANCE

- Clearly visible signs to find the castle
- Main entrance is barrier-free
- Glare-free lighting, corresponds to the area of use
- There is a barrier-free WC just around the corner from the ticket office (park entrance), although this has not been thoroughly evaluated.

## MUSEUM/EXHIBITIONS IN GENERAL

- Visits to state rooms only with a guide
- Documents are designed with high contrast
- No information in Braille
- Audible information (guided tours)
- Object and image information is high-contrast, max. height 120 cm
- No tactile models
- Magnifying glasses can be borrowed on request
- wheelchairs can be borrowed free of charge
- Seating available on request
- Guided tours for people with disabilities (no sign language interpreting), children's tours and special tours for senior citizens on request
- Rooms are evenly lit without glare

## SIGNPOSTING IN THE CASTLE

- Signage in large, high-contrast lettering, height approx. 160 cm
- Signage not tactile, no symbols, not consistent, no colour coding system

## CASH DESK AREA/SHOP

- Barrier-free access to cash desk
- Passage width min. 90 cm
- hinged door made of glass (colour-coded)
- Door handles (no turn, shell or knob handle) at a height of between 85 - 105 cm
- Accessibility on both sides of the door 150 x 150 cm
- Door threshold max. 2 cm high
- Cash desk height 111 cm, no under-desk wheelchair accessibility



Entrance to barrier-free WC Park



Barrier-free WC Park



Path to the Palace



Entrance gate to the Palace



- Operating elements of credit card machine at a maximum height of 85 - 100 cm
- Price boards and information at a height of 110 cm, in large font and high contrast

## CLOAKROOM

- Barrier-free access (room behind the shop)
- Cloakroom lockers at different heights
- Cloakroom hooks higher than 105 cm
- Only occupied during events
- Table height 75 cm



Access cashdesk

## LIFT

- to the Old Gallery on the 1st floor and to the State Rooms on the 2nd floor
- in the centre wing, barrier-free access via the arcades in the courtyard
- Entrance at least 90 cm wide, doors open automatically
- Space for entry and exit 150 x 150 cm
- Length 170 cm, width 100 cm
- Control elements at a height of 85 - 105 cm
- Push buttons tactile or in Braille
- Visible display, large enough and high-contrast
- No acoustic announcement
- Handrail or grabrail available
- No device for reversing (e.g. wall mirror)



Lift

## MAIN STAIRCASE

- Leads to the upper floors on both sides immediately after the shop
- Steps lower than 15 cm, all the same height
- Depth at least 31 cm
- Steps wide enough for 2 people
- Handrail left and right, easy to grasp
- Handrails between 85 and 105 cm high, do not extend 30 cm beyond the last step
- Steps not highlighted in colour



Staircase

## SECONDARY STAIRCASE

- Leads from the centre wing to the upper floors (accessible via the arcades in the courtyard)
- Same information as for the main staircase (steps higher, approx. 16 cm)

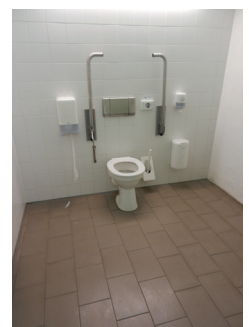
## BARRIER-FREE WC ON THE GROUND FLOOR

- 1st door (outside)
  - Glass door (colour-coded), 80 cm wide
  - hinged door, door threshold max. 2 cm
  - Door handles (no turn, shell or knob handle) at a height of 85 - 105 cm
  - Accessibility on both sides min. 100 x 100 cm
- 2nd door (inside)
  - 80 cm wide
  - hinged door, door stop max. 2 cm
  - Door handles (no turn, shell or knob handle) at a height of 114.5 cm (ÖNorm B 1610 max. 105 cm)
  - Accessibility on both sides min. 150 x 150 cm
- Barrier-free WC in ladies' toilet
  - Accessible for men and women
  - manoeuvring space in front of the WC 150 x 150 cm
  - folding grab rails on both sides, horizontal
  - Grab rails at a height of 75 - 90 cm
  - WC height 42 cm (ÖNorm B 1610 46-48 cm)
  - WC accessible from both sides (at least 90 cm space on one side)
  - WC flush at a height of between 85 and 105 cm
  - 150 x 150 cm space in front of the washbasin
  - Washbasin height approx. 80 cm
  - No emergency bell
  - Mirror not suitable for wheelchair users

© UMJ



Arcades



Barrier-free WC Palace



## STATE ROOMS (2ND FLOOR)

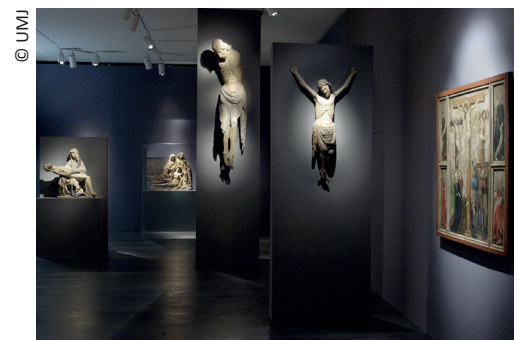
- Visits only with a guide
- Lift stops around the corner to the state rooms
- Door
  - Standard double glass door (not marked in contrasting colours)
  - Door threshold max. 2 cm high
  - Door width 80 cm (but double doors, i.e. 2 x 80 cm possible)
  - Door handles (no turn, shell or knob handle), height 110 cm
  - Accessibility on both sides 150 x 150 cm



Planetary Room and State Rooms

## ALTE GALERIE (1ST FLOOR)

- Lift stops directly next to main entrance
- Main entrance door
  - Automatic glass sliding door with colour coding, opens early and closes with a time delay
  - Door width min. 90 cm, door stop max. 2 cm
  - Accessibility on both sides 150 x 150 cm
- Side entrance door
  - hinged standard door made of glass, marked in contrasting colours
  - Door threshold max. 2 cm high
  - Door width 80 cm (but double doors, i.e. 2 x 80 cm possible)
  - Door handles (no turn, shell or knob handle) at a height of 110 cm
  - Accessibility on both sides 150 x 150 cm
- Side entrance ramp
  - Incline 9.4 %
  - 150 x 150 cm space at the start and end of the ramp
  - Non-slip profile
  - No handrails, wheel deflectors or coloured markings



Alte Galerie

- Exit 1st door (inside)
  - Automatic glass sliding door (not marked in contrasting colours), opens early and closes with a time delay
  - Door width min. 90 cm, door stop max. 2 cm
  - Accessibility on both sides 150 x 150 cm
- Exit 2nd door (outside)
  - Standard hinged door made of glass (not marked in contrasting colours)
  - Door threshold max. 2 cm high
  - Door width 90 cm
  - Door handles (no turn, shell or knob handle) at a height of 85 - 105 cm
  - Accessibility on both sides 100 x 100 cm



Access/Entrance Alte Galerie



Exit Alte Galerie

## COIN CABINET (GROUND FLOOR, CENTRE WING)

- Access
  - Accessible via arcades in the courtyard
  - Corridor to the mint: **NOT level and NOT suitable for wheelchairs**, due to historical flooring („Murnockerl“ = round river stones)
  - Path without steps, free of immovable obstacles
  - Path width at least 120 cm
  - No tactile or optical-visual guidance system
  - Sufficient lighting
- Door
  - Standard hinged glass door (not marked in contrasting colours)
  - Width 90 cm
  - Door threshold max. 2 cm
  - Door handles (no turn, shell or knob handle) at a height of 85 - 105 cm
  - Accessibility on both sides min. 100 x 100 cm
- Ramp
  - **Incline 14,3%**
  - There is a manoeuvring space of 150 x 150 cm at the start and end of the ramp



Courtyard with round river stone paving



Ramp Access/Entrance Coin Cabinet



- Width 120 cm
- Non-slip profile
- No handrails, wheel deflectors or coloured markings
- Showcases
  - Height approx. 80 cm
  - Information in showcases large and high-contrast design
  - Magnifying glasses (on request)

### SPECIAL EXHIBITION (GROUND FLOOR)

- opposite the cash desk/shop
- Standard hinged glass door (not marked in contrasting colours)
- Width 90 cm
- Door threshold max. 2 cm
- Door handles (no turn, shell or knob handle) at a height of 85 - 105 cm
- Accessibility on both sides min. 150 x 150 cm

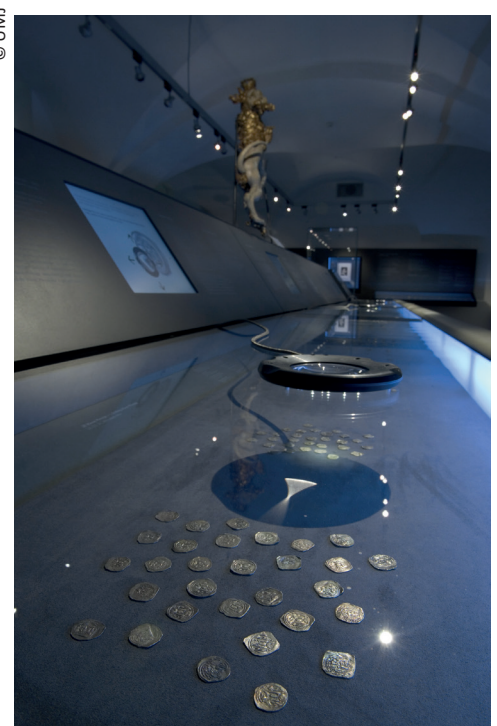
### ADDITIONAL INFORMATION

- Reduced price for people with disabilities, accompanying person free of charge
- People with learning difficulties are welcome guests
- Staff trained in working with people with disabilities
- Assistance dogs are accepted
- special children's tours and programmes
- Evacuation concept for people with disabilities
- Audible alarm system, but no visual or vibrating alarm

© UMJ



© UMJ



Coin Cabinet

As at 2009, all information without guarantee

Source: [http://www.bereit-fuer-barrierefreiheit.eu/de/Betriebe/?xt=CEDOSCheckResults&xtMethod=showDataset&cat\\_id=1324&tobj\\_id=1301&show\\_details=1&show\\_catalogue=1#catalogue](http://www.bereit-fuer-barrierefreiheit.eu/de/Betriebe/?xt=CEDOSCheckResults&xtMethod=showDataset&cat_id=1324&tobj_id=1301&show_details=1&show_catalogue=1#catalogue)