



MOTEL ONE

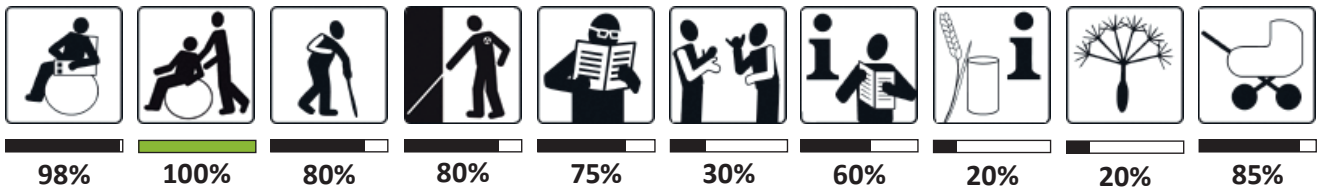
Jakominiplatz 7

8010 Graz

T +43 (0) 316 231528-0

graz@motel-one.com

www.motel-one.com/de/hotels/graz/hotel-graz



GENERAL INFORMATION

- 5 identical, barrier-free double rooms (1 per floor near the elevator)
- 2 identical, barrier-free single rooms (on the 1st and 2nd floors)
- partner dogs are welcome and free of charge
- visual alarm in barrier-free rooms and in the hallway; audible alarm throughout the building
- emergency system (in the bathrooms) leads to the reception; activating the emergency bell also triggers an audible and visual signal outside the room door
- orientation or escape plan in each room
- high chairs for children in the breakfast room and changing table in the general barrier-free restroom (on the basement floor)
- reception open 24 hours

PUBLIC ACCESSIBILITY

The hotel is located at the Jakominiplatz transportation hub, to which all trams and most buses lead. For details, please use the route planner of Verbundlinie Steiermark: <https://verkehrsankunft.verbundlinie.at>

PARKING

- No hotel-owned parking spaces; loading zone in front of the hotel (on the opposite side of the street)
- cooperation with the public underground parking garage „Operngarage“ on Opernring/Hamerlinggasse, about 150 m from the hotel; open 00:00 - 24:00; reduced rates for hotel guests
- 1 public accessible parking space for disabled guests at Am Eisernen Tor, near house no. 5 (about 50 m from the hotel)
- 2 public accessible parking spaces for disabled guests on Opernring, near house no. 7 (about 150 m from the hotel)

**INFORMATION FOR WHEELCHAIR USERS
 AND PEOPLE WITH MOBILITY IMPAIRMENTS**

PUBLIC UNDERGROUND PARKING GARAGE „OPERNGARAGE“

- 4 disabled parking spaces on level 1, marked with floor markings and signs
- level surface, at least 3.5 m wide and 6.5 m long
- barriers open automatically and can be operated from the car

MAIN ENTRANCE

- The main entrance is also the barrier-free entrance.
- Access via sidewalk. **It is not ramped directly in front of the entrance.** If coming from the opposite side of the street, a small detour (30 m) to the next corner of the hotel is necessary, where the pedestrian crossing with ramped curb is located.
- longitudinal gradient max. 6%, cross gradient max. 2%
- entrance is covered (path to entrance is not covered)
- automated glass sliding door; opens early and closes with a delay;
- entrance is stepless; clear width 145 cm
- maneuvering space in front of the doors on both sides at least 150 cm
- grating and dirt-trapping mat are wheelchair accessible



Entrance

RECEPTION

- reception area is stepless; maneuvering space in front of the counter at least 150 cm
- counter **height 126 cm, not accessible underneath**; mobile ATM;
- **no lowered space at a maximum height of 85 cm**; but seating and tables in the lobby can be used for filling out paperwork
- various types of seating with different seat heights



Reception

INTERIOR

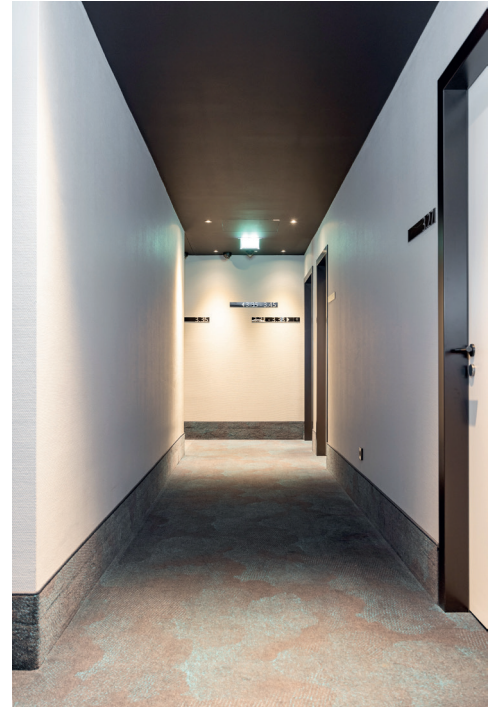
- paths are stepless, corridors very wide (150 cm)
- paths are even and free from obstacles
- **carpet is not very wheelchair accessible**
- fire doors in the corridors with a passage width of 126 cm, always open! (otherwise, due to door closers, they would be difficult to open, no lateral approachability next to the door handle)

ELEVATOR (from the lobby to the rooms and to the restrooms on the basement floor)

- accessible without steps
- maneuvering space when entering and exiting at least 150 x 150 cm
- car dimensions 138 x 160 cm, door clearance 90 cm
- no downward staircase opposite the elevator door
- light barriers extend over the entire door height
- control buttons at a height of 85 - 120 cm
- continuous handrail at a height of 90 cm

STAIRCASE (from the lobby to the rooms and to the restrooms on the basement floor)

- all steps are the same height (16.5 cm), **27 cm deep** (minimum standard is 30 cm), 118 cm wide
- steps are straight, landing after 9 steps
- entry and exit step designed with a contrasting color
- handrail on both sides, continuous on the inside, easily graspable; height standard (85 - 90 cm)
- handrail extended by at least 30 cm at the beginning and end of the steps
- fall protection up to 100 cm high



Interior



Elevator



Staircase

BARRIER-FREE DOUBLE ROOM

(Example: Room No. 126)

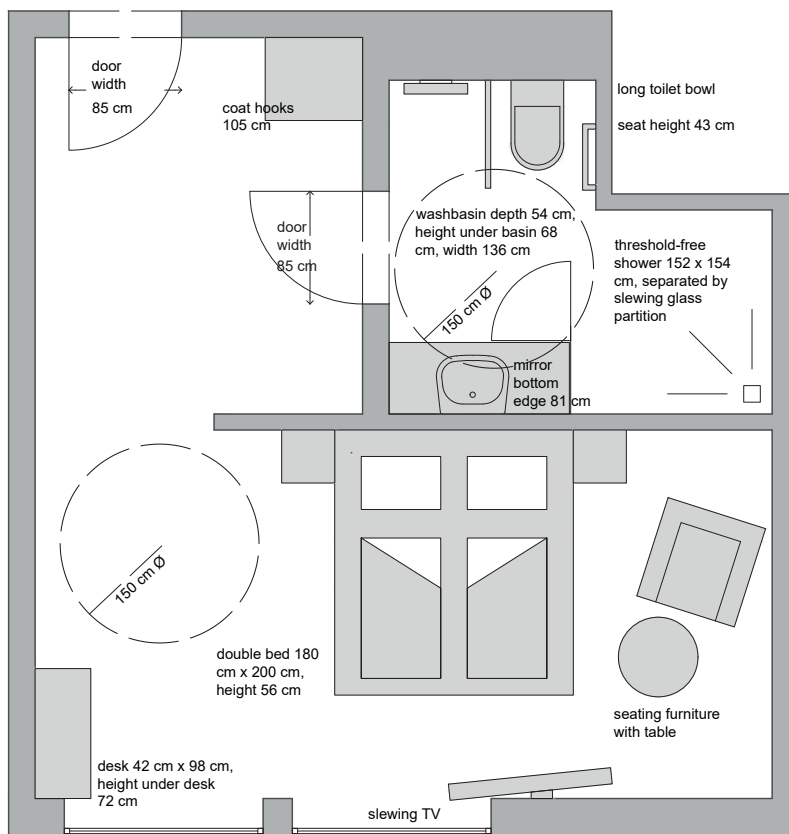
Accessible without steps via the elevator.

door

- swinging door with a passage width of 85 cm; door handle at 105 cm height
- stepless, easy to open, no door closer
- at least 50 cm of lateral approach space on both sides of the door next to the door handle

room

- card reader (for room light) at a height of 90 cm
- clear space next to the bed: at least 150 x 150 cm on both sides (obstructed on the right by an upholstered chair and a small table, which can be removed in advance)
- bed height **56 cm** (standard 45 - 50 cm)
- passage widths in the room: at least 150 cm; behind the bed only 78 cm (to access the right side of the bed)
- maneuvering space in front of the window at least 150 x 150 cm, window handle at standard height
- light switch can be operated from the bed
- light switch and air conditioning control at a height of 90 cm, coat hooks at 105 cm
- **carpet is not very wheelchair accessible**



Barrier-free Double Room

BATHROOM ROOM NO. 126

- clear space of 150 x 150 cm provided
- light switch at 90 cm height, coat hooks **at 130 cm** (standard maximum 110 cm)

door

- Swinging door with a passage width of 85 cm; door handle at 105 cm height
- stepless, easy to open, no door closer
- opens outward, not lockable
- lateral approach space of at least 150 x 150 cm on both sides of the door
- 50 cm of lateral approach space next to the door handle on the opening side, **only 30 cm** on the closing side

shower

- shower area without steps, non-slip floor;
- minimum size of 150 x 150 cm available
- vertical handrail reaches a height of at least 150 cm (**but positioned too close to the corner**)
- horizontal handrail at 85 cm height, easily graspable; only a short handrail on one wall, a longer **handrail of at least 90 cm is missing on the 2nd wall**
- mobile shower seat with adjustable height, **slightly wobbly** and **small seat surface of 30 cm in diameter** (standard 40 x 40 cm)
- emergency system in the bathroom **not reachable from the shower**
- shower fixture (single lever) at standard height; adjustable height handheld



Bathroom Double Room



Bathroom Double Room

WC

- at least 120 cm of space in front of the WC for maneuvering
- the WC is approachable from the left side, with 90 cm of space for maneuvering on this side
- seat height is **43 cm** (Standard is 46 – 48 cm), **no backrest available**
- long toilet bowl (distance from the front edge of the WC to the rear wall is 70 cm)
- horizontal, foldable grab bars on both sides, at standard height; easily operable, **not securely fixed**
- grab bars extend at least 15 cm beyond the front edge of the WC
- **no vertical grab bar**
- toilet paper and flush reachable while seated
- Emergency call system reachable while seated on the WC, cord reaches the floor



Bathroom Double Room

washbasin

- clear space of 150 x 150 cm in front of the washbasin
- clearance height under the washbasin is **67 cm** (Standard is a minimum of 70 cm), clearance width is 136 cm
- washbasin top edge is at 81 cm, depth is 54 cm, with a flat-plug (low-profile) siphon
- distance from the faucet (single lever) to the front edge of the washbasin is **40 cm** (Standard is 20 – 35 cm)
- mirror spans the entire width of the vanity, bottom edge at a height of 81 cm

**BARRIER-FREE SINGLE ROOM
 (using Room No. 142 as an example)**

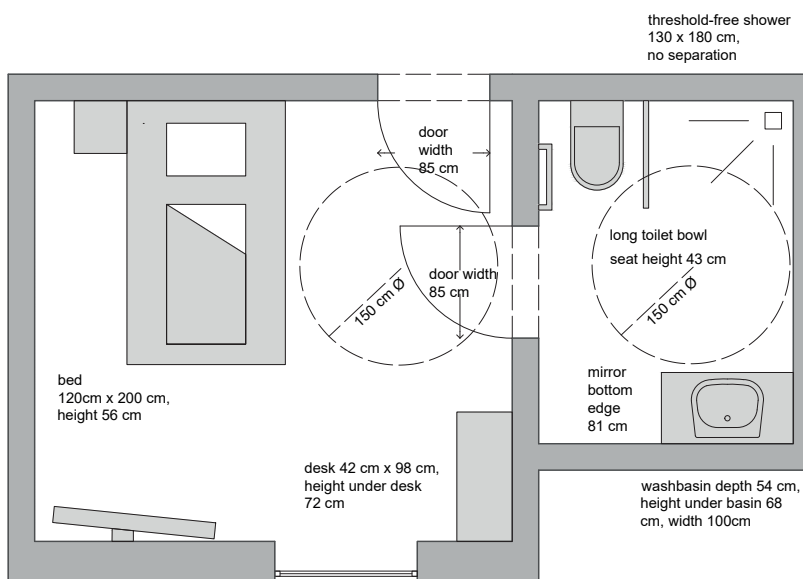
Accessible without steps via the elevator.

door

- swing door with 85 cm of passage width; door handle at 105 cm height
- without thresholds, easy to open, no door closer
- minimum approach area of 200 x 150 cm on the open side of the door
- minimum approach area of 150 x 120 cm on the hinge side
- minimum side approach area of 50 cm on both sides of the door next to the door handle

room

- card reader (for room lights) at a height of 90 cm
- clear space next to the bed: at least 150 x 150 cm on the right side
- bed height is **56 cm** (Standard is 45 - 50 cm)
- passageway width in the room: 120 cm
- window handle at standard height
- light switch reachable from the bed
- light switch and air conditioning control at a height of 90 cm, coat hooks at 105 cm height
- **carpeting is not very wheelchair-friendly**



Barrier-free Single Room

BATHROOM FOR ROOM NO. 142

- clear space of 150 x 150 cm
- light switch at a height of 90 cm, coat hooks at **130 cm** (Standard maximum is 110 cm)

door

- swing door with 85 cm of passage width; door handle at 105 cm height
- without thresholds, easy to open, no door closer
- opens outward, not lockable
- minimum approach area of 150 x 150 cm on both sides of the door
- minimum side approach area of 50 cm on the open side and hinge side, next to the door handle

shower

- threshold-free shower area, non-slip floor
- minimum size of 130 x 180 cm, **no separation (shower curtain or door)**
- vertical grab bar extends up to a height of at least 150 cm (**though positioned too close to the corner**)
- horizontal grab bar at a height of 85 cm, easily graspable; only a short grab bar on one wall, **lacking a longer grab bar of at least 90 cm on the second wall**
- mobile shower seat with adjustable height, **somewhat unstable** and a small seat area of **30 cm in diameter** (Standard is 40 x 40 cm)
- shower faucet (single lever) at standard height; hose showerhead is height-adjustable



Bathroom Single Room

WC

- at least 120 cm space for approaching in front of the toilet
- toilet accessible from the right, with 130 cm space for approaching on this side
- **seat height 43 cm** (standard is 46 – 48 cm), **no backrest available**
- long toilet bowl (distance from the front edge of the toilet to the back wall 70 cm)
- horizontal, foldable grab bars on both sides, at standard height; easy to use, **not securely fastened**
- grab bars extend at least 15 cm beyond the front edge of the toilet
- **no vertical grab bar**
- clear distance between the grab bars **71 cm** (standard is 65 – 70 cm)
- toilet paper reachable from sitting on the toilet, flush in the grab bar
- emergency call system reachable from sitting on the toilet, cord reaches the floor

washbasin

- clear space of 150 x 150 cm in front of the washbasin
- height under the washbasin **68 cm** (standard is at least 70 cm), width under the washbasin at least 100 cm
- basin top edge 81 cm, depth 54 cm, flat plaster trap
- distance of the faucet (single lever) to the front edge of the washbasin **40 cm** (standard is 20 – 35 cm)
- mirror over the entire width of the washbasin, bottom edge at 81 cm height

BREAKFAST ROOM (= LOBBY)

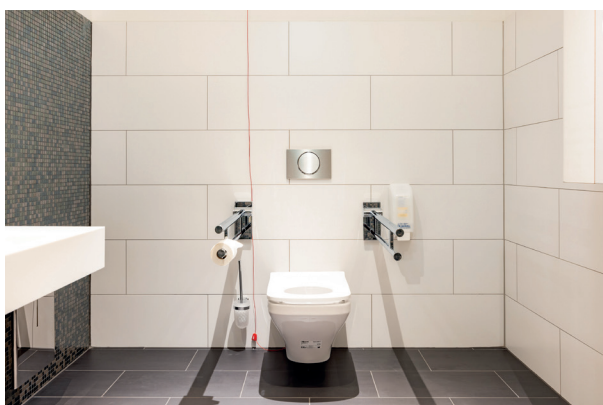
- access without thresholds; floor easily rollable
- various types of tables, some of which are easily accessible (at least 80 cm wide, 70 cm high, 60 cm deep), some are not; table top edges maximum 85 cm
- various types of chairs with different seat heights, with or without armrests
- self-service buffet; however, there is enough staff available to assist
- food offerings at 90 cm height, at least 150 x 150 cm space in front of the counter
- **no lowered area at the counter** with a maximum height of 85 cm, **not accessible from below**
- main aisle clear passage width at least 100 cm



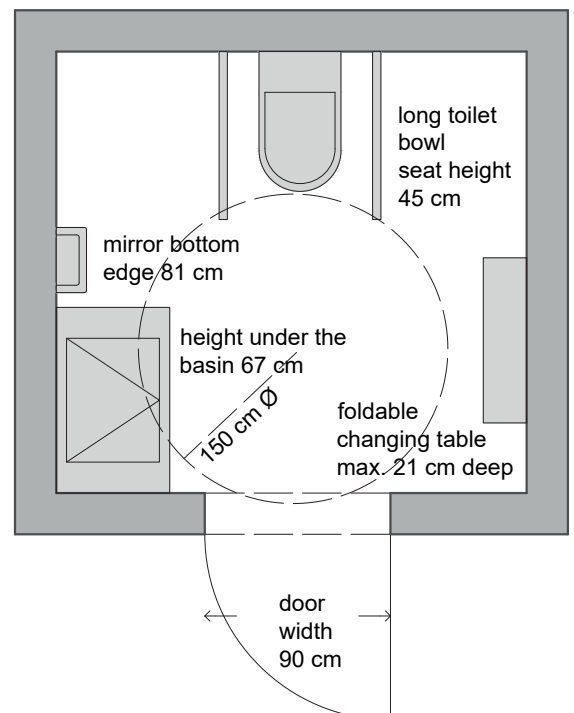
Breakfast Room

GENERAL ACCESSIBLE RESTROOM (ON THE BASEMENT FLOOR)

- unisex restroom
- accessible by lift; entrance with a chip card (room card). External breakfast guests receive a chip card at the reception.



General accessible Restroom



door

- passage width of 90 cm, no door threshold
- opens outward, not lockable
- **door hard to open due to door closer**; door handle at standard height
- clear space on both sides of the door at least 150 x 150 cm
- lateral approach area of at least 50 cm next to the door handle on both sides of the door

toilet

- at least 120 cm space in front of the toilet
- toilet accessible from both sides, lateral space on the left 100 cm, on the right 90 cm
- seat height **45 cm** (standard is 46 – 48 cm), **no backrest available**
- long toilet bowl (distance from the front edge of the toilet to the back wall 70 cm)
- horizontal, foldable grab bars on both sides, at standard height; clear distance between them at standard level
- grab bars easy to use, **not securely fastened**
- grab bars extend at least 15 cm beyond the front edge of the toilet
- **no vertical grab bar**
- toilet paper and flush reachable from sitting on the toilet
- emergency call system reachable from sitting on the toilet, cord reaches the floor
- activation of emergency call is visually confirmed outside the door through optical and acoustic signals
- emergency call leads to the reception

washbasin

- clear space of 150 x 150 cm in front of the basin
- height under the basin **67 cm** (standard is at least 70 cm), width under the basin at least 100 cm
- washbasin top edge 80 cm, depth 55 cm, flat plaster trap
- distance of the faucet (single lever) to the front edge of the washbasin **43 cm** (standard is 20 – 35 cm)
- mirror available, bottom edge at 81 cm height

other

- foldable changing table available
- hand sanitizer available

INFORMATION FOR BLIND AND VISUALLY IMPAIRED INDIVIDUALS

MAIN ENTRANCE

- The main entrance is also the accessible entrance.
- entrance covered and free from obstacles, path to the entrance not covered
- **no tactile floor guide lines**; curb edges easily and securely detectable with a blind cane (sidewalk)
- automated sliding glass door; opens prematurely and closes with a delay;
- **markings not sufficient**

RECEPTION & INTERIOR AREA

- reception clearly visible; **no tactile floor guide system**
- reception area adequately illuminated, glare-free
- paths free from obstacles; floor coverings **do not contrast visually from building elements**
- lighting in the interior area is sufficient, although not very bright in the corridors
- room labels, **floor designations** not tactile
- fire doors in the hallway are always open

ELEVATOR

- light barriers extend throughout the height of the door
- push buttons at stops are located near the elevator door, tactile, **no Braille**
- push buttons inside the elevator are tactile (raised text, **no Braille**), emergency button highlighted
- pressing the push buttons is visually confirmed
- audible signal when the elevator arrives and audible announcement inside the elevator (in German and English)
- continuous handrail, at standard height

STAIRS (from the lobby to the rooms and to the restrooms in the basement)

- all steps of the same height (16.5 cm), **depth 27 cm** (standard is at least 30 cm), width 118 cm
- steps are straight, landing after 9 steps
- entry and exit step designed with contrasting color
- handrail on both sides, continuous on the inside, securely graspable; height at standard level (85 – 90 cm)
- handrail extended at least 30 cm at the beginning and end of the steps
- fall protection 100 cm high
- stairwell well illuminated

ACCESSIBLE ROOMS

- accessible by lift; double rooms near the lift, **single rooms not near the lift**
- no obstacles on the way to the room
- **door signage not tactile**
- swinging door, easy to open, no door closer
- door handle contrasts from the surroundings
- audible alarm system in the building

BATHROOM

- swinging door, not lockable, easy to open
- single lever faucet in the shower
- emergency call system visually contrasting, tactually detectable (cord)

BREAKFAST ROOM / RESTAURANT

- self-service buffet; however, there is enough staff available to assist
- table with sufficient noise reduction available

ACCESSIBLE RESTROOM (UNISEX, IN THE BASEMENT)

- located right across from the elevator
- entrance with a chip card (room card); external breakfast guests receive a chip card at the reception.
- door opens outward, not lockable
- **door hard to open due to door closer**
- emergency bell present (alarm leads to the reception), reachable from sitting on the toilet
- emergency bell visually contrasting, tactually detectable
- activation of emergency call is visually confirmed outside the door through optical and acoustic signals

INFORMATION FOR HEARING IMPAIRED AND DEAF INDIVIDUALS

GENERAL

- **no inductive hearing system at reception**
- optical alarm system in the corridors (flashlight)
- tables in the breakfast room also have glare-free lighting

ROOMS

- visual alarm available in all accessible rooms (in the bathroom)
- knocking on the door or doorbell **not visually perceptible**
- **no deaf person's kit**
- emergency call system in the bathroom (alarm leads to the reception)

ELEVATOR

- pressing the buttons is visually confirmed (inside and outside)
- emergency call is also visually confirmed

INFORMATION FOR ALLERGY SUFFERERS

- **carpets and heavy curtains in the rooms**
- **high-pile carpets in the corridors**
- **no allergen-free bedding**
- no carpets in the breakfast room; curtains and cushions not prone to dust
- the same rooms are always provided for guests with pets; the reception is aware of which rooms are guaranteed to be free of pet hair
- offers for food allergy sufferers available

As of January 2023

All information without guarantee