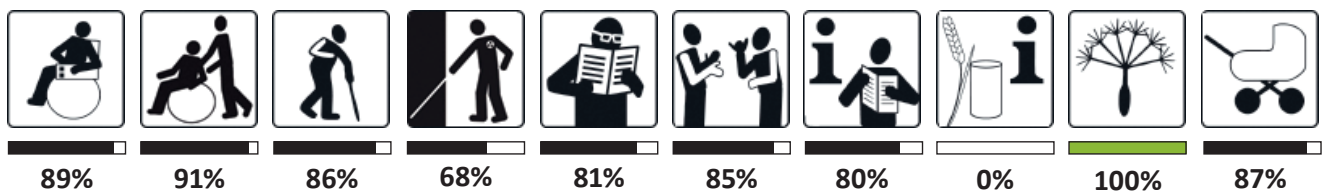




NEUE GALERIE GRAZ, BRUSEUM (AT JOANNEUMSVIERTEL)

Joanneumsviertel
 8010 Graz
 Tel: +43 316 8017-9100
 joanneumsviertel@museum-joanneum.at
 www.neuegaleriegraz.at



General information

- Access possible from several sides: via Landhausgasse, Kalchberggasse or Raubergasse
- Main entrance accessible via an escalator, **not barrier-free**
- The barrier-free side entrance is located in the passageway to the Lesliehof (address: Joanneumsviertel 5).
- Reduced admission for people with disabilities; free admission for assistance persons
- People with disabilities can take part in the usual guided tours
- There are also special guided tours for people with disabilities (e.g. guided tours in simple language and sign language; guided tours for blind people, during which selected objects can also be touched with a glove).
- There are also guided tours for children and guided tours in English
- A wheelchair can be borrowed free of charge on site.
- It is easy to find your way around and there is signposting throughout.
- Staff learn how to assist people with disabilities
- Audible alarm, **but no visible alarm**
- Evacuation plan for people with disabilities available
- Assistance dogs are welcome
- Changing table at the barrier-free WC on the 2nd basement floor



Main entrance

ACCESSIBILITY

Accessibility by public transport

Please use the route planner of Verbundlinie Steiermark:
<https://verkehrsankunft.verbundlinie.at/>

Parking

- 2 public disabled parking spaces in Kalchberggasse
- 4 public disabled parking spaces in Landhausgasse
- 2 public disabled parking spaces in Raubergasse
- Short-stay parking zone around the Joanneumsviertel

INFORMATION FOR WHEELCHAIR USERS AND PEOPLE WITH MOBILITY IMPAIRMENTS

PATHS OUTSIDE (IN THE JOANNEUMSVIERTEL)

- Path outside without thresholds, at least 150 cm wide, free of obstacles
- Access via Landhausgasse or Kalchberggasse is easy and vibration-free, **not via Raubergasse**
- Longitudinal gradient max. 6%, transverse gradient max. 2%
- **Path not covered**; illuminated throughout
- **Path longer than 100m**, no seating along the way



Paths outside

BARRIER-FREE ENTRANCE

- Located in the passageway to the Lesliehof (address: Joanneumsviertel 5)
- **It is a side entrance** (an escalator leads to the main entrance)
- **Entrance area not easy to find**
- Access without thresholds, free of obstacles, covered
- **Slope of 4%** (standard max. 3%)
- **Clear width of entrance door 85 cm** (standard min. 90 cm), **1 cm threshold** (only on one side)
- Automated hinged door made of glass, easy to open
- outside you have to press the door opening button, inside the door opens automatically (takes 2 seconds)



Barrier-free entrance

- Door **does not open early** (it takes 2 seconds), it closes with a time delay
- **Door opening side not labelled**
- Door handle (no turning or shell handle) at standard height
- Door opening button at 70 cm height; **door closer, as fire protection door**
- Swivelling area **is not visually marked on the floor**
- manoeuvring space on both sides of the door at least 150 cm in diameter



Barrier-free entrance

LIFT

(from the barrier-free entrance to the foyer/checkout area on the 2nd basement floor)

- Accessible without thresholds, lift door width min. 90 cm, light barriers at max. 100 cm height
- Lift car size 140 x 180 cm
- minimum manoeuvring space of 150 x 150 cm for entry and exit
- No descending stairs opposite the landing door
- Push buttons in the stops are located in the immediate vicinity of the lift door
- Command buttons at standard height
- Emergency call available
- Handrail available, at standard height
- Position indicator at standard height



Lift and staircase to foyer and exhibition

STEPS

to the foyer on the 2nd basement floor

- Steps straight, 210 cm wide, **29 cm deep** (standard min. 30 cm)
- 16 - 17 cm high (**not all steps the same height**)
- Landing after max. 20 steps
- Entrance and exit steps at front edge **not designed in contrasting colours**
- Handrails on both sides, continuous on one side; can be safely gripped, at standard height
- continue horizontally for at least 30 cm at both ends of the steps
- No protruding slab steps

FOYER (2ND BASEMENT)

Information desk / cash desk

- Accessible without thresholds; 150 x 150 cm manoeuvring space in front of counter
- Lowered space with max. height of 85 cm, wheelchair accessible
- credit card machine can be used at a height of 80 - 110 cm
- Sufficient space in the checkout area; seating available (with sturdy armrests and backrests, **difficult to stand up**)



Cloakroom & lockers

- **Hooks not at standard height (80 - 120 cm)**
- **No staff nearby who could help**
- Some lockers are also at a height that can be used by wheelchair users
- Movement space in front of lockers at least 150 cm in diameter
- **Doors do not open to 180 degrees**



Information, checkout area

BARRIER-FREE WC ON THE 2ND BASEMENT FLOOR (by the lockers)

- Accessible without thresholds using the lift described above
- Separately arranged (unisex)
- opens with Euro-Key (available at the information desk)

WC door

- hinged door with at least 80 cm clearance, no thresholds
- Easy to open, no door closer
- Opens outwards and can be unlocked from the outside in an emergency
- The approach area on the opening side of the door is at least 200 x 150 cm, and at least 150 x 120 cm on the closing side
- There is a side access area of at least 50 cm on both sides of the door next to the door handle
- Door handles at standard height (no turn, shell or knob handle); horizontal pull handle on the closing side
- **Door signage very high (170 cm instead of 140 - 160 cm)**



Lockers and access to WCs

WC

- 150 x 150 cm manoeuvring space available in the WC room
- WC accessible from both sides; at least 90 cm space on the left, less than 90 cm on the right (but at least 80 cm)
- At least 120 cm space in front of the WC
- Long WC bowl (distance from the front edge of the WC to the rear wall at least 65 cm)
- WC height complies with standard (46 - 46 cm), back support available
- Horizontal folding grab rails on both sides; at standard height, distance complies with standard
- All grab rails easy to operate, securely fastened
- grab rails protrude at least 15 cm above the front edge of the toilet; protrude max. 20 cm into the room when folded up
- Roll holder attached to the folding support handle
- Flush at standard height, accessible from the WC when seated
- Emergency bell accessible from the WC from a seated position
- Emergency bell accessible from the floor at a maximum height of 35 cm



Barrier-free WC on the 2nd basement

Washbasin

- Movement area in front of the washbasin min. 150 x 150 cm
- Height of top edge of washbasin 80 - 85 cm, free height under washbasin at least 70 cm
- Depth of washbasin complies with standard, wheelchair accessible to at least 100 cm width
- Flat plaster siphon, made of plastic
- Single-lever tap, distance to the front edge of the washbasin standard
- Mirror lower edge **at 110 cm height** (standard max. 95 cm)

Other

- Operating level of fittings (e.g. soap and towel dispenser, hand dryer) is at a height of 80 - 110 cm
- Waste bin can be operated with one hand

LIFT

(from the foyer to the Neue Galerie and the Bruseum)

- Accessible without thresholds, lift door at least 90 cm wide, light barriers at a maximum height of 100 cm
- Lift car size 140 x 140 cm
- minimum manoeuvring space of 150 x 150 cm for entry and exit
- No descending stairs opposite the landing door
- Push buttons in the stops are located in the immediate vicinity of the lift door
- Command buttons and emergency call at standard height
- Handrail available, at standard height; mirror opposite lift door
- Position indicator at standard height



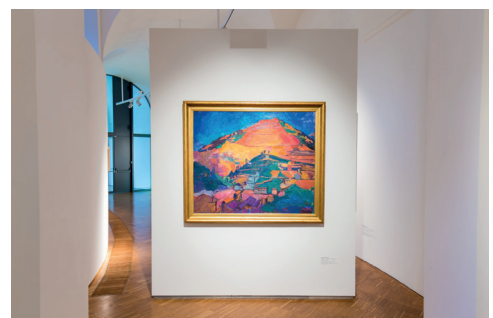
Lift from foyer to Neue Galerie

INTERIOR

- All floors are accessible without thresholds
- 2 steps in the Bruseum can be bypassed using ramps/slopes (**5% resp. 6% gradient**)
- Paths are at least 120 cm wide, passage widths at least 90 cm
- At the end of the paths and when changing direction, there must be a manoeuvring space of at least 150 cm in diameter
- Paths free of obstacles
- Floor coverings are slip-resistant and firmly laid
- Seating available (seat height 46-50 cm, **without stable armrests and backrests**)
- Orientation and escape plan available
- Good signage throughout the building, although **the different floors are somewhat confusing**
- Paths and rooms well lit



Staircase and access to lift



Exhibition area

Exhibition

- Object texts at standard height
- Exhibition texts designed in high-contrast, large and legible lettering
- **Room texts at a height of 190 cm** (standard 100-160 cm)

Doors from the staircase to the exhibition areas

- hinged glass doors with at least 80 cm clearance
- No thresholds, easy to open (motorised opening aid)
- Lever handle on the opening side, panic bar on the closing side (both at standard height)
- **Door does not open early**, closes with a time delay
- **Door closer, as fire protection door**
- Swivelling area **on floor not visually marked**
- Movement area with a diameter of 150 cm on both sides of the door
- There is a side approach area of at least 50 cm on both sides of the door next to the door handle



Door to exhibition area

Lifting platform to a small part of the exhibition area

- max. lifting height of 2 metres
- Platform at least 110 x 140 cm in size; wheel deflectors available
- Movement area of 150 x 150 cm in front of and behind the lifting platform
- Door at least 90 cm wide
- Control elements at standard height
- Help can be summoned using a bell



Slope



Lifting platform

„AUDITORIUM“ EVENT ROOM IN THE FOYER ON THE 2ND BASEMENT FLOOR

- Accessible without thresholds
- Barrier-free WC nearby
- Clear door width at least 80 cm
- All furniture mobile, ensuring a passage width of at least 90 cm
- Tables with wheelchair access, desk height max. 85 cm
- Seating with sturdy armrests and backrests, seat height 46 - 50 cm

INFORMATION FOR BLIND AND VISUALLY IMPAIRED PEOPLE

PATHS OUTSIDE

- Access for blind and visually impaired people is from Raubergasse. There is more information at a stele.
- However, the tactile guidance system only starts at the entrance (it leads from the Kalchberggasse entrance to the barrier-free entrance).
- Floor guidance system **not high-contrast**
- Path free of obstacles, illuminated throughout, **not covered**
- Walkway boundaries are **not easily recognisable with a white cane**
- Clear height under signs is at least 220 cm



Access from Raubergasse with information stele for blind people

BARRIER-FREE ENTRANCE

- Located in the passageway to the Lesliehof (address: Joanneumsviertel 5)
- **It is a side entrance** (an escalator leads to the main entrance)
- Entrance area **not easy to find**
- Automated hinged door made of glass, labelled with contrasting markings
- Easy to open: outside you have to press the door opening button, inside the door opens automatically
- Door opening button stands out in contrast from neighbouring components
- Door does **not open prematurely** (it takes 2 seconds), closes with a time delay
- Door opening side **not labelled**, but secured with tactile attention field
- **Door closer, as fire protection door**
- **Swivelling area is neither visually nor tactilely marked on the floor**

LIFT (from the barrier-free entrance to the foyer/checkout area on the 2nd basement floor)

- **No tactile floor labelling**
- Push buttons in the stops are located in the immediate vicinity of the lift door
- Push buttons inside and outside are tactile, with raised lettering, inside with Braille
- Push button for building exit highlighted
- Pressing the push buttons is confirmed audibly on the inside
- Audible signal when the lift arrives; audible, clear announcement in the lift
- Display in the lift is large and easy to read (inside and outside)
- Handrail available

STEPS TO THE FOYER ON THE 2ND BASEMENT FLOOR

- Steps straight, 210 cm wide, **29 cm deep** (standard min. 30 cm)
- 16 - 17 cm high (**not all steps the same height**)
- Landing after max. 20 steps
- Entrance and exit steps at front edge **not designed in contrasting colours**
- Handrails on both sides, continuous on one side; can be safely gripped, at standard height
- continue horizontally for at least 30 cm at both ends of the steps
- No protruding slab steps

FOYER (2ND BASEMENT)

Information desk / cash desk

- Tactile floor information leads to the counter
- Counter stands out visually in contrast to its surroundings, easily recognisable
- Counter is glare-free and illuminated according to the area of use
- Staff are happy to help
- **No tactile map of the surroundings at reception**

Cloakroom & lockers

- **No staff in the immediate vicinity**
- **Locker labelling not tactile**

BARRIER-FREE WC ON THE 2ND BASEMENT FLOOR (BY THE LOCKERS)

- Accessible without thresholds using the lift described above
- Separately arranged (unisex)
- Opens with Euro-Key (available at the information desk)
- hinged door, not automated
- Door opens outwards, can be opened from the outside in an emergency
- Door handle contrasts with neighbouring components
- Emergency bell has a visually contrasting design, can be reached from the WC when seated;
- Emergency bell can be reached from the floor at a maximum height of 35 cm
- Furnishings stand out visually in contrast to their surroundings

LIFT (from the foyer to the Neue Galerie and the Bruseum)

- **No tactile floor labelling**
- Push buttons in the stops are located in the immediate vicinity of the lift door
- Push buttons inside and outside are tactile, with raised lettering and Braille
- Push button for building exit is **not highlighted** (or the highlighted push button belongs to a different floor)
- Pressing the inside and outside push buttons is audibly confirmed
- Audible signal when the lift arrives; audible, clear announcement in the lift
- Display in the lift is large and easy to read (inside and outside)
- Handrail available

INDOOR AREA

- Paths clear of obstacles
- Acoustic alarm system
- Floor coverings stand out visually in contrast to other components
- Lighting of paths and rooms sufficient and appropriate to the area of use
- **No tactile orientation plan** available; **the different floors are somewhat confusing**
- High-contrast and well-lit signage
- Room labelling and floor markings **not tactile**

Exhibition

- Audio guide available, but no audio guide with audio description for blind and visually impaired people
- Object texts at standard height
- Exhibition texts designed with high contrast, in large or easily legible font; **not tactile**
- Room texts **at a height of 190 cm** (standard 100-160 cm)

Doors from the staircase to the exhibition areas

- hinged glass doors, not labelled with contrasting markings
- Door and door handle stand out in high contrast from the neighbouring components
- Easy to open (motorised opening aid)
- Lever handle on the opening side, panic bar on the closing side (both at standard height)
- **Door does not open early**, closes with a time delay
- **Door closer, as fire protection door**
- **Door opening side not labelled**
- **Swivelling area on floor neither visually nor tactilely marked**

“AUDITORIUM“ EVENT ROOM IN THE FOYER ON THE 2ND BASEMENT FLOOR

- **No tactile floor guidelines**
- Attention was paid to the acoustic design of the room
- the room is glare-free and evenly lit

INFORMATION FOR HEARING IMPAIRED AND DEAF PEOPLE

- Inductive hearing system at the cash desk, labelled with a pictogram
- Guided tours with sign language interpretation are offered on certain dates
- A mobile induction loop for deaf people with cochlear implants is available for guided tours (please register in good time!)
- Rooms are evenly lit without glare
- Exhibition texts are designed according to the two-senses principle (visual-auditory)
- Texts are high-contrast, but **not in large or legible font**
- **No visual alarm system**

LIFTS

- Pressing the push buttons inside and outside is visibly confirmed
- Pressing the emergency call is visibly confirmed

EVENT ROOM „AUDITORIUM“ (2ND BASEMENT FLOOR):

- Attention was paid to the acoustic design of the room
- Inductive hearing system available, **not labelled with pictogram**
- the room is glare-free and evenly lit

INFORMATION FOR ALLERGY SUFFERERS

- The museum is free of dust-prone carpets, curtains and upholstered furniture.

Status: January 2024, all information without guarantee

Source: http://www.bereit-fuer-barrierefreiheit.eu/de/Betriebe/?xt=CEDOSCheckResults&xtMethod=showDataset&cat_id=1588&tobj_id=2807

Photos: Universalmuseum Joanneum, Graz Tourismus – Harry Schiffer, UMJ – N. Lackner